

Assignment

Date _____ Period _____

Find the x-intercepts if there are any and find the vertex.

1) $y = (x + 3)^2 - 1$

2) $y = (x - 3)^2 + 1$

3) $y = (x + 4)^2 - 4$

4) $y = (x + 4)^2 - 2$

5) $y = (x + 1)^2 - 2$

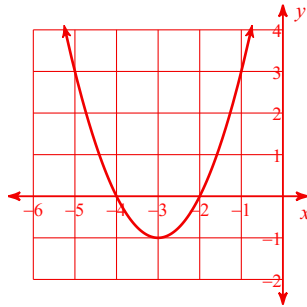
6) $y = (x + 4)^2 - 1$

Assignment

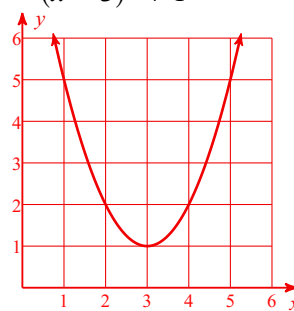
Date _____ Period _____

Find the x-intercepts if there are any and find the vertex.

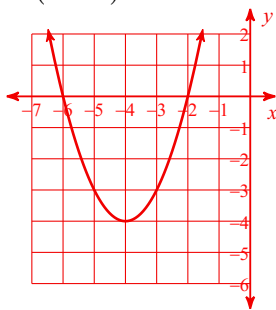
1) $y = (x + 3)^2 - 1$



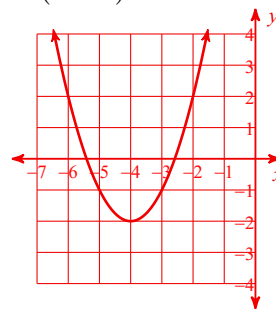
2) $y = (x - 3)^2 + 1$



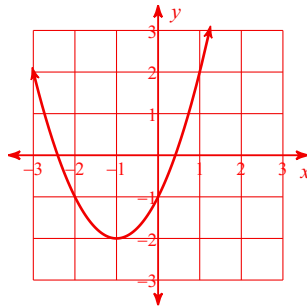
3) $y = (x + 4)^2 - 4$



4) $y = (x + 4)^2 - 2$



5) $y = (x + 1)^2 - 2$



6) $y = (x + 4)^2 - 1$

